

PROJECT PROFILE: Platform buried route & associated route works Kent & Sussex

PROJECT SPECIFICATIONS

Status:	Completed
Started:	November 2021
Completed:	May 2024
Client:	Bam Nuttall
Location:	Various
SVR Disciplines:	Platform buried route construction, delivery of materials, Cubis Ducting & Chambers, Route works, Tarmac reinstatement, Site Clearance,



ABOUT THE PROJECT

Sunville Rail were awarded the contract by our client BAM Nuttall as part of CP6 Feeder Renewals to carry out works installing buried route & associated route works across various platforms in Kent and Sussex.

PROJECT OVERVIEW

Sunville Rail were required to supply the necessary labour, plant, equipment and materials to undertake the construction of 6 way duct route's for various feeder locations through platforms within the Kent and Sussex area as part of CP6 feeder renewals.

As part of the package Sunville Rail have completed the installation of platform route works at the following sites;

- Chelsfield Station
- Glynde Station
- Newhaven Station

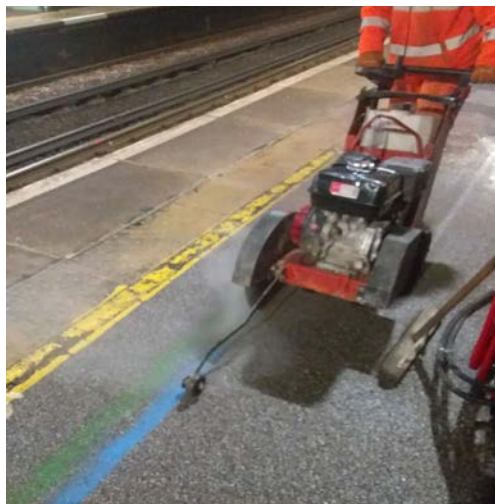
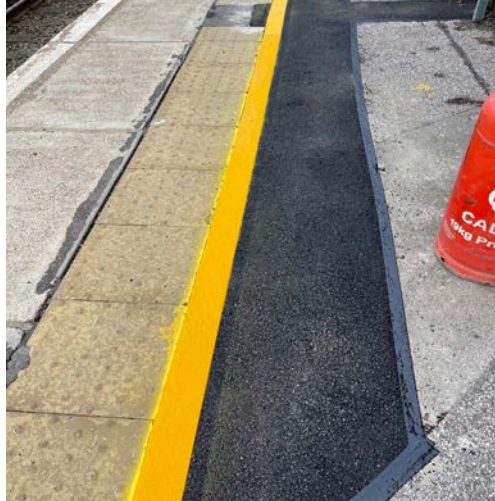
PROJECT PROFILE: Platform buried route & associated route works Kent & Sussex

Sunville Rail were responsible for the below whilst working on these sites;

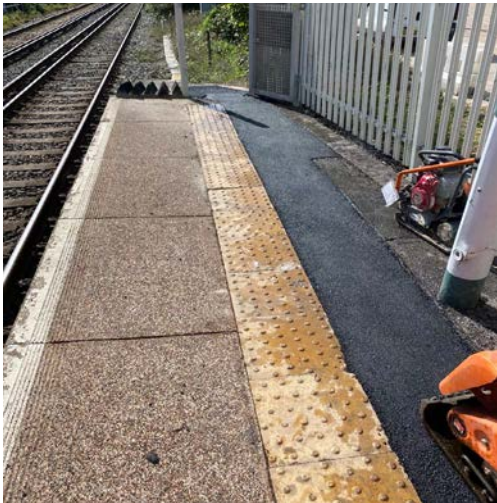
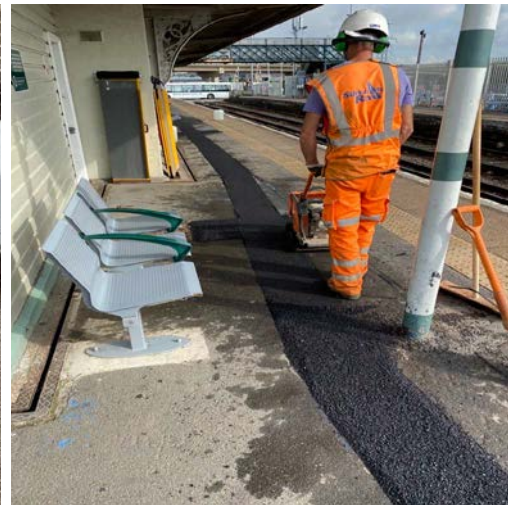
- Provide all plant and equipment to complete scope of works.
- Provide all provision of labour
- Organise all aggregate and material deliveries to site
- HV Comp responsibilities including securing HV trough routes
- Install 6way Cubis ducting or flexi duct routes.
- Supply excavator machine, drivers and associated banksmen.
- Carry out machine and hand excavation throughout
- Tarmac reinstatement & line marking
- Removal and disposal of inert waste
- Provide planned look ahead and hour by hour reporting of works
- Install temporary works equipment and provide temporary works qualified staff



PROJECT PROFILE: Platform buried route & associated route works Kent & Sussex



PROJECT PROFILE: Platform buried route & associated route works Kent & Sussex



For more information
please contact:

Paul Hayes
 Managing Director
 Sunville Rail Limited
paul.hayes@sunvillerrail.co.uk